

**SUBSURFACE UTILITY ENGINEERING**  
**QUALITY LEVEL - A: Test Hole Data Information**  
 SAM, Inc. Project Number: 31151-31

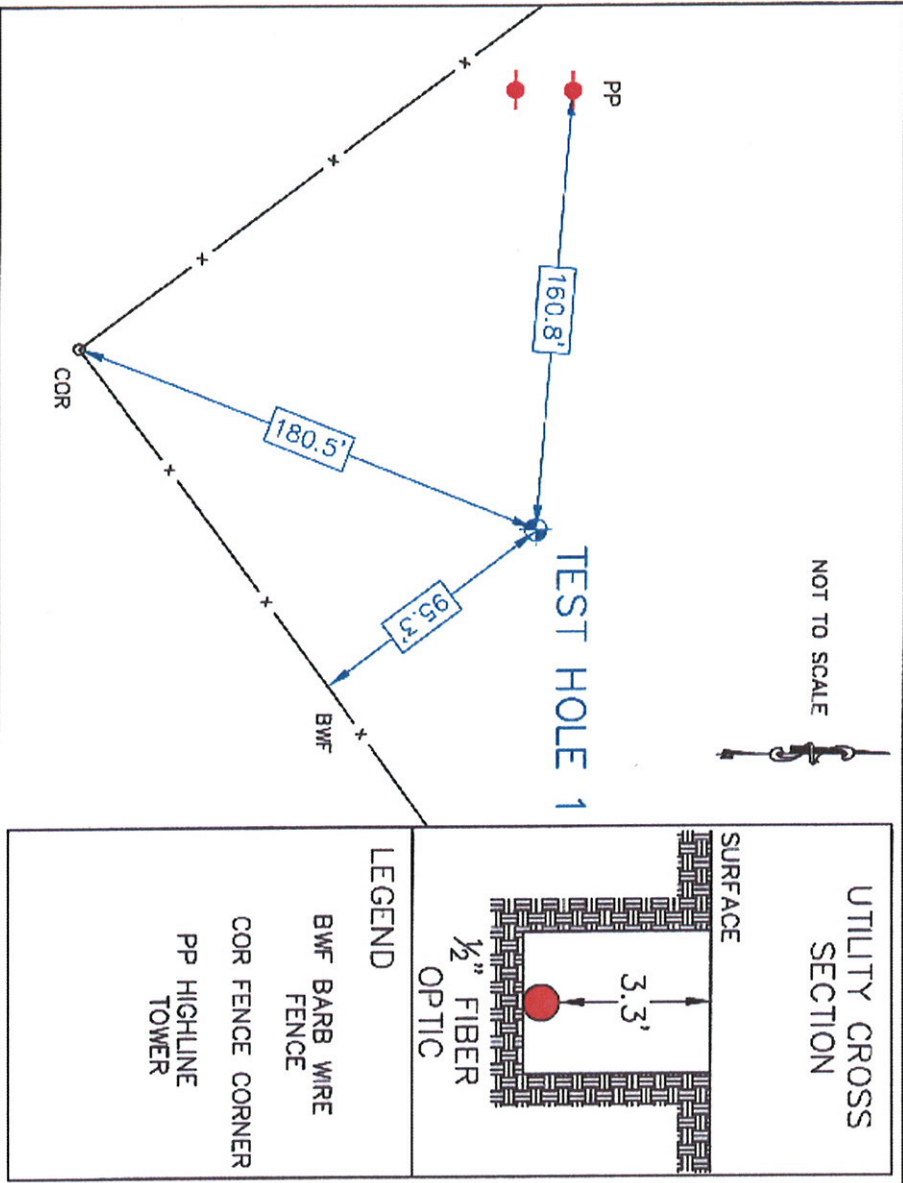
**TEST HOLE NUMBER: 1**  
 Date: July 8, 2011  
 Client: C P & Y, Inc.  
 Project: Leon Creek Interceptor



Project Location: **San Antonio, Texas**  
 Utility Location: **Leon Creek Wastewater Plant**  
 Utility Sta./Offset: **N/A**  
 Record Utility: **Fiber Optic line**  
 Utility Owner:  
 Contact/Phone:  
 Address:  
 Field Crew: **Gabe Johnson and Miller Pipeline**  
 Field Conditions: **Off roadway**

Surface Material: **Natural ground**  
 Surface Elevation: **520.50**  
 Thickness & Condition: **Dry**  
 Trench Material: **Black clay**  
 Utility Bedding Material: **Black clay**  
 Utility Found: **1/2" direct bury Fiber Optic line**  
 Utility Condition: **Good**  
 Utility Depth (Top): **3.3'**

NOT TO SCALE



**PROJECT CONTROL**  
 Pt # 5  
 IRRC  
 N = 13653027.7963  
 E = 2120693.4107  
 Elev = 540.69

Pt # 7  
 IRRC  
 N = 13650292.3812  
 E = 2123526.9099  
 Elev = 528.93

**UTILITY COORDINATES**  
 N = 13648232.99  
 E = 2126950.82  
 Elev = 517.2

**COMMENTS**

1. SAM, Inc. located Test Hole # 1 by records and utility locator for the fiber optic line prior to air/vacuum excavation of the utility.
2. No additional utilities were found within Test Hole # 1 excavation.
3. All excavation was performed with air/vacuum excavation equipment.
4. The Test Hole was backfilled with excavated material.
5. The picture depicts the existing fiber optic line.

**TEST HOLE PICTURE**



TEXAS BOARD OF PROFESSIONAL ENGINEERS COMPANY  
 REGISTRATION # F-1937

1-20-2011



**SUBSURFACE UTILITY ENGINEERING**  
**QUALITY LEVEL – A: Test Hole Data Information**  
 SAM, Inc. Project Number: 31151-31

**TEST HOLE NUMBER: 2**  
 Date: July 7, 2011  
 Client: C P & Y, Inc.  
 Project: Leon Creek Interceptor

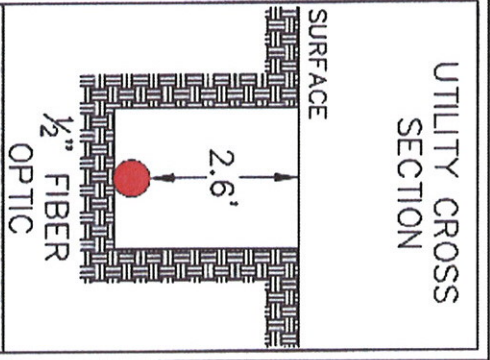
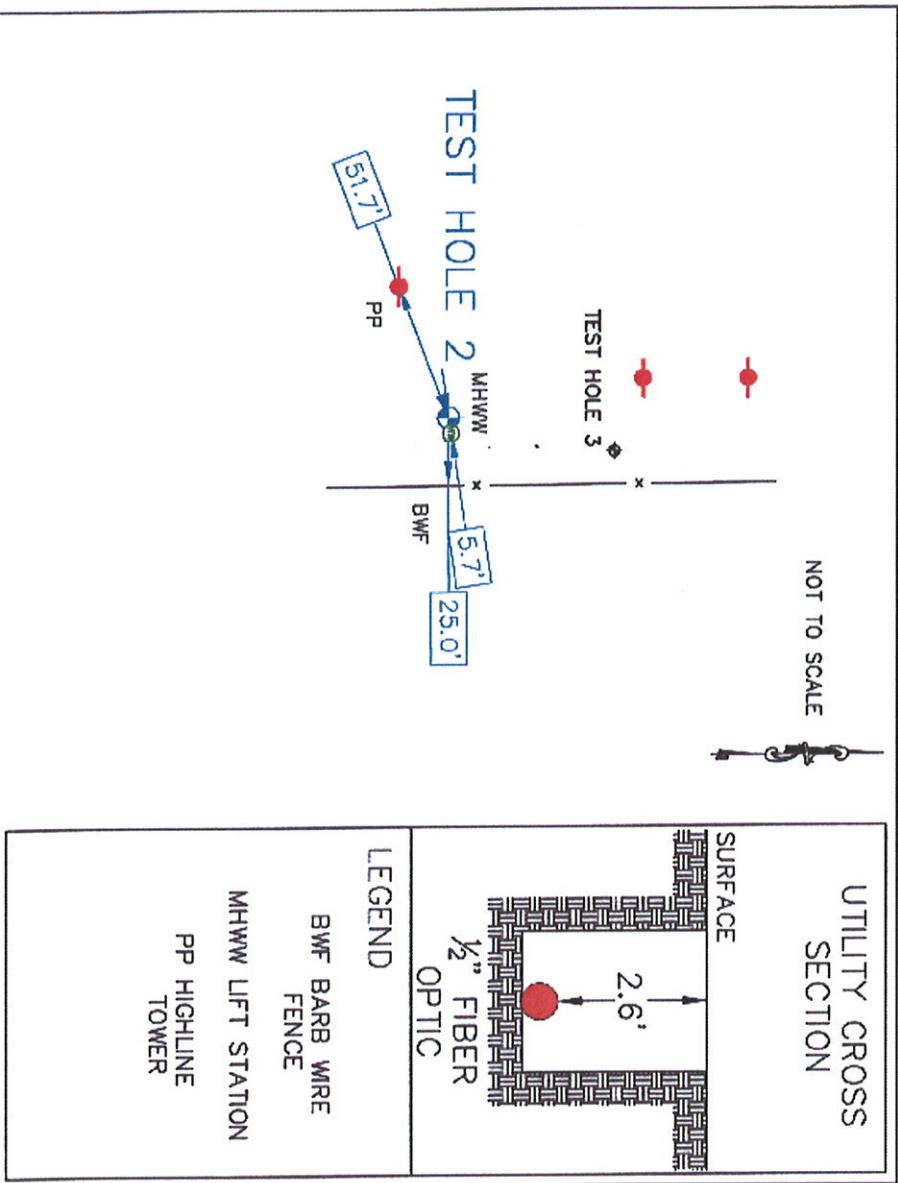


Project Location:	San Antonio, Texas	Surface Material:	Natural ground
Utility Location:	Leon Creek Wastewater Plant	Surface Elevation:	527.68
Utility Sta./Offset:	N/A	Thickness & Condition:	Dry
Record Utility:	Fiber Optic line	Trench Material:	Rocky black clay
Utility Owner:		Utility Bedding Material:	Rocky black clay
Contact/Phone:		Utility Found:	1/2" direct bury fiber optic line
Address:		Utility Condition:	Good
Field Crew:	Gabe Johnson and Miller Pipeline	Utility Depth (Top):	2.6'
Field Conditions:	Off roadway		

**COMMENTS**

1. SAM, Inc. located Test Hole # 2 by records and utility locator for the fiber optic line prior to air/vacuum excavation of the utility.
2. No additional utilities were found within Test Hole # 2 excavation.
3. All excavation was performed with air/vacuum excavation equipment.
4. The Test Hole was backfilled with excavated material.
5. The picture depicts the existing fiber optic line.

**TEST HOLE PICTURE**



**LEGEND**

- BWF BARB WIRE FENCE
- MHW LFT STATION
- PP HIGHLINE TOWER

**PROJECT CONTROL**  
 Pt # 5  
 IRRC  
 N= 13653027.7963  
 E= 2120693.4107  
 Elev = 540.69

Pt # 7  
 IRRC  
 N= 13650292.3812  
 E= 2123526.9099  
 Elev = 528.93

**UTILITY COORDINATES**  
 N = 13649850.42  
 E = 2124626.72  
 Elev = 525.1



TEXAS BOARD OF PROFESSIONAL ENGINEERS COMPANY  
 REGISTRATION # F-1937



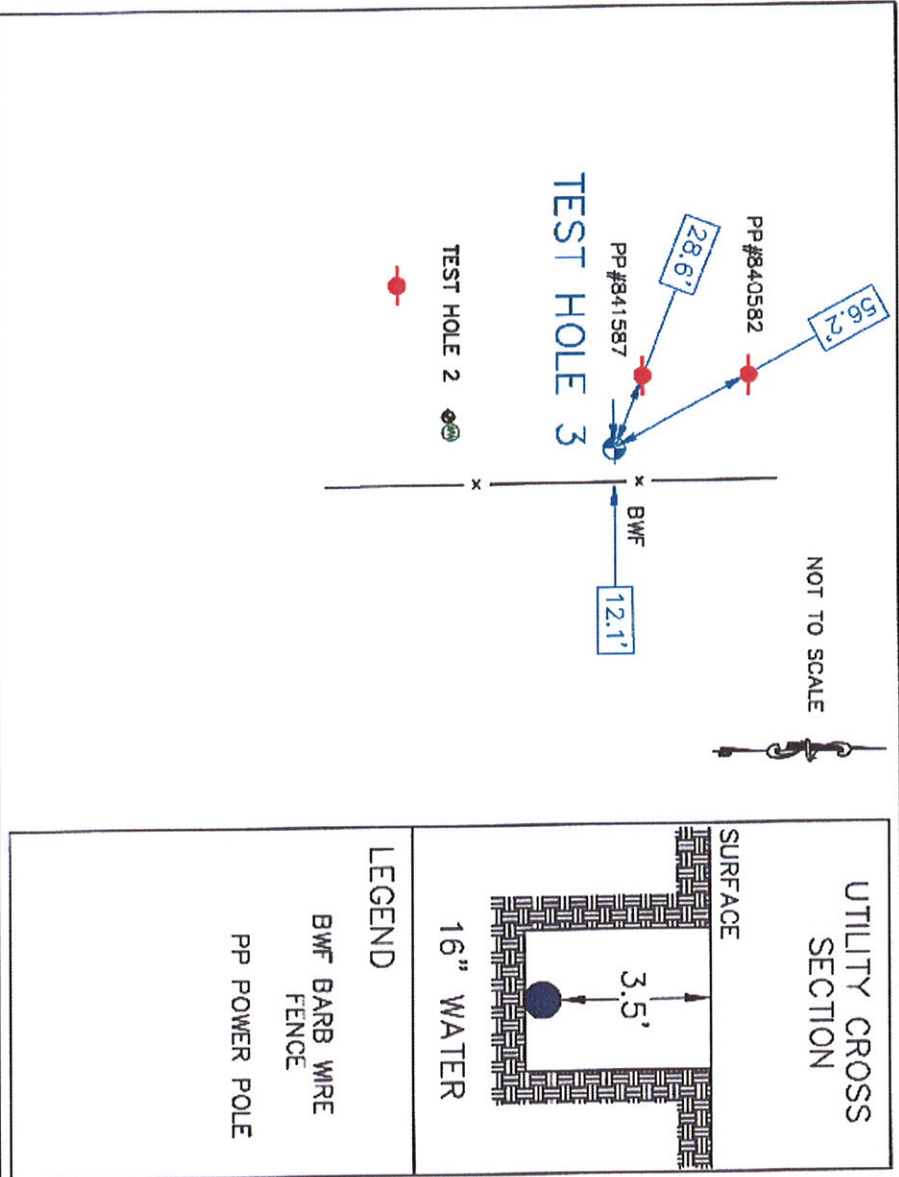
**SUBSURFACE UTILITY ENGINEERING**  
**QUALITY LEVEL - A: Test Hole Data Information**  
 SAM, Inc. Project Number: 31151-31

**TEST HOLE NUMBER: 3**

Date: July 7, 2011  
 Client: C P & Y, Inc.  
 Project: Leon Creek Interceptor

Project Location: **San Antonio, Texas**  
 Utility Location: **Leon Creek Wastewater Plant**  
 Utility Sta./Offset: **N/A**  
 Record Utility: **16" Water line**  
 Utility Owner: **SAWS**  
 Contact/Phone: **Jose Carreno 210-233-3466**  
 Address: **2800 US Hwy 281 N., San Antonio, TX 78212**  
 Field Crew: **Gabe Johnson and Miller Pipeline**  
 Field Conditions: **Off roadway**

Surface Material: **Natural ground**  
 Surface Elevation: **527.89**  
 Thickness & Condition: **Dry**  
 Trench Material: **Rocky black clay**  
 Utility Bedding Material: **Rocky black clay**  
 Utility Found: **16" poly pipe with tracer wire**  
 Utility Condition: **Good**  
 Utility Depth (Top): **3.5'**



**PROJECT CONTROL**

Pt # 5  
 IRRC  
 N = 13653027.7963  
 E = 2120693.4107  
 Elev = 540.69

Pt # 7  
 IRRC  
 N = 13650292.3812  
 E = 2123526.9099  
 Elev = 528.93

**UTILITY COORDINATES**  
 N = 13649911.47  
 E = 2124639.21  
 Elev = 524.4

**COMMENTS**

1. SAM, Inc. located Test Hole # 3 by records and utility locator for the water line prior to air/vacuum excavation of the utility.
2. No additional utilities were found within Test Hole # 3 excavation.
3. All excavation was performed with air/vacuum excavation equipment.
4. The Test Hole was backfilled with excavated material.
5. The picture depicts the existing water line.

**TEST HOLE PICTURE**



TEXAS BOARD OF PROFESSIONAL ENGINEERS COMPANY  
 REGISTRATION # F-1937



**SUBSURFACE UTILITY ENGINEERING**  
**QUALITY LEVEL - A: Test Hole Data Information**  
 SAM, Inc. Project Number: 31151-31

**TEST HOLE NUMBER: 4**

Date: July 7, 2011  
 Client: C P & Y, Inc.  
 Project: Leon Creek Interceptor



Project Location: **San Antonio, Texas**  
 Utility Location: **Leon Creek Wastewater Plant**  
 Utility Sta./Offset: **N/A**  
 Record Utility: **16" Water line**  
 Utility Owner: **SAWS**  
 Contact/Phone: **Jose Carrero 210-233-3466**  
 Address: **2800 US Hwy 281 N., San Antonio, TX 78212**  
 Field Crew: **Gabe Johnson and Miller Pipeline**  
 Field Conditions: **Off roadway**

Surface Material: **Natural ground**  
 Surface Elevation: **534.01**  
 Thickness & Condition: **Dry**

Trench Material: **Rocky black clay**  
 Utility Bedding Material: **Rocky black clay**

Utility Found: **16" poly pipe without tracer wire**  
 Utility Condition: **Good**

Utility Depth (Top): **3.9'**

**PROJECT CONTROL**

Pt # 5  
 IRRC  
 N = 13653027.7963  
 E = 2120693.4107  
 Elev = 540.69

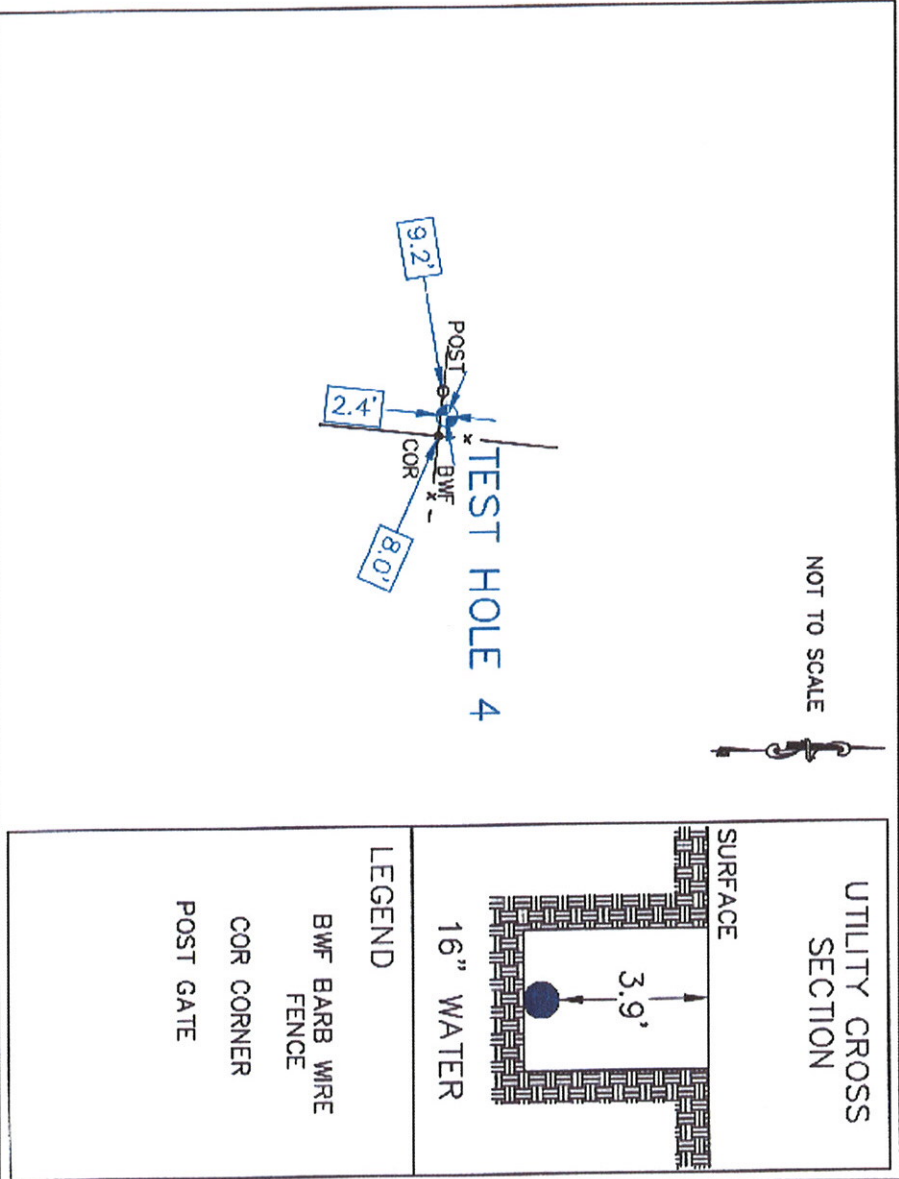
Pt # 7  
 IRRC  
 N = 13650292.3812  
 E = 2123526.9099  
 Elev = 528.93

**UTILITY COORDINATES**

N = 13650289.78  
 E = 2124643.20  
 Elev = 530.1

**LEGEND**

- BWF BARB WIRE FENCE
- COR CORNER
- POST GATE



**COMMENTS**

1. SAM, Inc. located Test Hole # 4 by utility records for the water line prior to air/vacuum excavation of the utility.
2. No additional utilities were found within Test Hole # 4 excavation.
3. All excavation was performed with air/vacuum excavation equipment.
4. The Test Hole was backfilled with excavated material.
5. The picture depicts the existing water line.

**TEST HOLE PICTURE**



TEXAS BOARD OF PROFESSIONAL ENGINEERS COMPANY  
 REGISTRATION # F-1937



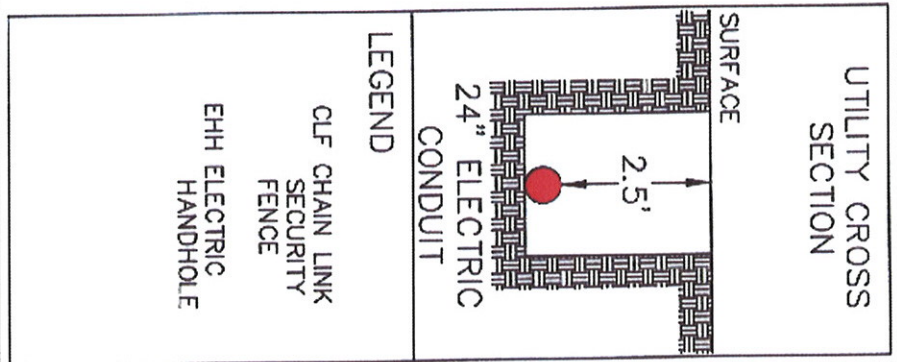
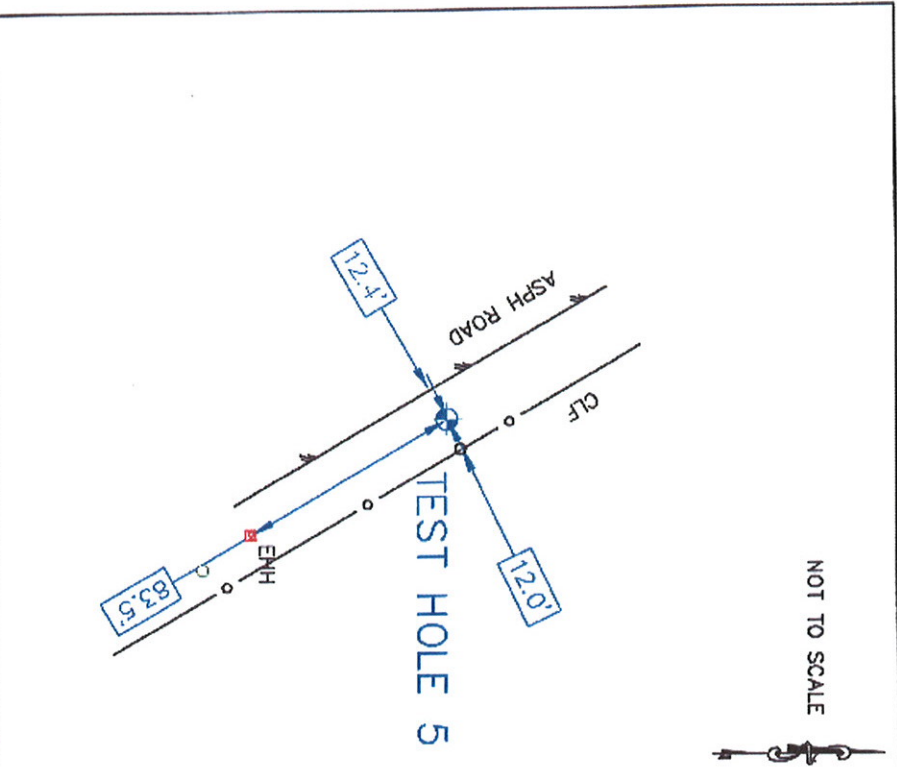
**SUBSURFACE UTILITY ENGINEERING**  
**QUALITY LEVEL - A: Test Hole Data Information**  
 SAM, Inc. Project Number: 31151-31

**TEST HOLE NUMBER: 5**

Date: July 8, 2011  
 Client: C P & Y, Inc.  
 Project: Leon Creek Interceptor

Project Location: **San Antonio , Texas**  
 Utility Location: **Leon Creek Wastewater Plant**  
 Utility Sta./Offset: **N/A**  
 Record Utility: **Electric Conduit**  
 Utility Owner: **CPS Energy**  
 Contact/Phone: **Ricardo Rodriguez 210-353-2226**  
 Address: **145 Navarro St, San Antonio, TX 78296**  
 Field Crew: **Gabe Johnson and Miller Pipeline**  
 Field Conditions: **Off roadway**

Surface Material: **Natural ground**  
 Surface Elevation: **527.19**  
 Thickness & Condition: **Dry**  
 Trench Material: **Black clay**  
 Utility Bedding Material: **Black clay**  
 Utility Found: **24" concrete conduit**  
 Utility Condition: **Good**  
 Utility Depth (Top): **2.5'**



**PROJECT CONTROL**

Pt # 5  
 IRRC  
 N= 13653027.7963  
 E= 2120693.4107  
 Elev = 540.69

Pt # 7  
 IRRC  
 N= 13650292.3812  
 E= 2123526.9099  
 Elev = 528.93

**UTILITY COORDINATES**  
 N = 13652185.58  
 E = 2121778.51  
 Elev = 524.7

**COMMENTS**

1. SAM, Inc. located Test Hole # 5 by records and utility locator for the electric line prior to air/vacuum excavation of the utility.
2. No additional utilities were found within Test Hole # 5 excavation.
3. All excavation was performed with air/vacuum excavation equipment.
4. The Test Hole was backfilled with excavated material.
5. The picture depicts the existing conduit.

**TEST HOLE PICTURE**



7-20-2011

TEXAS BOARD OF PROFESSIONAL ENGINEERS COMPANY  
 REGISTRATION # F-1937